

PARKING & WAITING REVIEW SEPTEMBER 2015

APPENDIX 1 RECOMMENDATIONS

REF	LOCATION	COMPLAINT	SITE VISIT	COMMENTS	PLAN
1	<u>Holton Close, Birchington.</u>	TDC, KCC and members – are concerned about inconsiderate parking.	30/07/15 RCS & LD	Agree. To install Double Yellow lines long the bends in the road to deal with sight lines, reduce potential vehicular conflict.	See site plan 1
2	<u>St James Terrace, j/w St Davids Close, Birchington.</u>	TDC, KCC and members – are concerned about inconsiderate parking.	30/07/15 RCS & LD	Agree. To install Double Yellow line corner protection on both sides of the junction and along a section of road to deal with sight lines, reduce potential vehicular conflict.	See site plan 2
3	<u>Stringer Drive, Birchington.</u>	TDC, KCC and members – are concerned about inconsiderate parking.	30/07/15 RCS & LD	Agree. To install Double Yellow lines long the bend in the road to deal with sight lines, reduce potential vehicular conflict.	See site plan 3
4	<u>Norman Road, Broadstairs.</u>	TDC, KCC and members – are concerned about inconsiderate parking.	30/07/15 RCS & LD	Agree. To extend Double Yellow lines both sides of the road to deal with sight lines, reduce potential vehicular conflict.	See site plan 4
5	<u>Byron Avenue, j/w Shakespeare Road, Margate.</u>	TDC, KCC and members – are concerned about inconsiderate parking.	30/07/15 RCS & LD	Agree. To install Double Yellow lines both sides of bend in the road to deal with sight lines, reduce potential vehicular conflict.	See site plan 5
6	<u>Grotto Hill, j/w Grotto Gardens, Margate.</u>	Residents, TDC and KCC – are concerned about inconsiderate parking.	30/07/15 RCS & LD	Agree. To extend Double Yellow lines on one side of the road and at the junction both sides of the road to deal with sight lines, reduce potential vehicular conflict.	See site plan 6
7	<u>Lower Northdown Avenue, Margate.</u>	Residents, TDC and KCC – are concerned about inconsiderate parking.	04/03/15 RCS & LD	Agree. To install Double Yellow line corner protection on both sides of the junction and along a section of road to deal with sight lines, reduce potential vehicular conflict.	See site plan 7
8	<u>Old Crossing Road, Margate.</u>	TDC, KCC and members – are concerned about inconsiderate parking.	30/07/15 RCS & LD	Agree. To extend Double Yellow lines on one side of the road to deal with sight lines, reduce potential vehicular conflict.	See site plan 8
9	<u>Shottendane Road, j/w Manston Road, Margate.</u>	Residents, TDC, KCC and members – are concerned about inconsiderate parking.	30/07/15 RCS & LD	Agree. To extend Double Yellow lines on one side of the road to deal with sight lines, reduce potential vehicular conflict.	See site plan 9
10	<u>Albert Street, Ramsgate.</u>	TDC, KCC and members – are concerned about inconsiderate parking.	30/07/15 RCS & LD	Agree. To extend Double Yellow lines on one side of the road to deal with sight lines, reduce potential vehicular conflict.	See site plan 10

11	<u>Albion Mews, Ramsgate.</u>	Residents, TDC and KCC – are concerned about inconsiderate parking.	9/4/2015 RCS & LD	Agree. To install double yellow lines on along the one side of the road to reduce potential vehicular conflict.	See site plan 11
12	<u>Codrington Road, j/w Crescent Road, Ramsgate.</u>	TDC, KCC and members – are concerned about inconsiderate parking.	30/07/15 RCS & LD	Agree. To install Double Yellow line corner protection on both sides of the junction to deal with sight lines, reduce potential vehicular conflict.	See site plan 12
13	<u>Dumpton Park Drive, Ramsgate.</u>	Residents, TDC, KCC and members – are concerned about inconsiderate parking.	30/07/15 RCS & LD	Agree. To extend Double Yellow lines both sides of the road to deal with sight lines, reduce potential vehicular conflict.	See site plan 13
14	<u>Duncan Road, j/w Codrington Road, Ramsgate.</u>	TDC, KCC and members – are concerned about inconsiderate parking.	30/07/15 RCS & LD	Agree. To install Double Yellow line corner protection on both sides of the junction to deal with sight lines, reduce potential vehicular conflict.	See site plan 14
15	<u>Ellington Road, j/w Codrington Road, Ramsgate.</u>	TDC, KCC and members – are concerned about inconsiderate parking.	30/07/15 RCS & LD	Agree. To install Double Yellow line corner protection on both sides of the junction to deal with sight lines, reduce potential vehicular conflict.	See site plan 15
16	<u>Fir Tree Close, j/w Southwood Gardens Ramsgate.</u>	Residents, TDC & members – are concerned about inconsiderate parking.	28/04/15 RCS & LD	Agree. To install Double Yellow line on one side of the junction to deal with sight lines, and reduce potential vehicular conflict.	See site plan 16
17	<u>Hallcroft Court, j/w Ashburnham Road, Ramsgate.</u>	TDC, KCC and members – are concerned about inconsiderate parking.	30/07/15 RCS & LD	Agree. To install Double Yellow line corner protection on both sides of the junction to deal with sight lines, reduce potential vehicular conflict.	See site plan 17
18	<u>Station Approach Road, Ramsgate.</u>	Stagecoach, TDC, KCC and members – are concerned about inconsiderate parking.	30/07/15 RCS & LD	Agree. To extend Double Yellow lines on one side of the road to deal with sight lines, reduce potential vehicular conflict.	See site plan 18
19	<u>Wellington Crescent, j/w Madeira Walk, Ramsgate.</u>	Residents, KCC & TDC – are concerned about the lack of parking available.	9/4/2015 RCS & LD	Agree. To remove yellow lines to allow additional free parking bays for residents.	See site plan 19
20	<u>Cedric Road, j/w Cuthbert Road, Westgate.</u>	TDC, KCC and members – are concerned about inconsiderate parking.	30/07/15 RCS & LD	Agree. To install Double Yellow line corner protection on both sides of the junction to deal with sight lines, reduce potential vehicular conflict.	See site plan 20
21	<u>Dent-de-lion Road j/w Cuthbert Road, Westgate.</u>	TDC, KCC and members – are concerned about inconsiderate parking.	30/07/15 RCS & LD	Agree. To install Double Yellow line corner protection on both sides of the junction to deal with sight lines, reduce potential vehicular conflict.	See site plan 21
22	<u>Egbert Road, j/w Ethelred Road, Westgate.</u>	TDC, KCC and members – are concerned about inconsiderate parking.	30/07/15 RCS & LD	Agree. To install Double Yellow line corner protection on both sides of the junction to deal with sight lines, reduce potential vehicular conflict.	See site plan 22

23	<u>Ivanhoe Road, Westgate</u>	TDC, KCC and members – are concerned about inconsiderate parking.	30/07/15 RCS & LD	Agree. To install Double Yellow line along the eastern side of the road only to deal with sight lines, reduce potential vehicular conflict and to reduce pavement parking..	See site plan 23
24	<u>Westgate Bay Avenue, j/w Ethelbert Square, Westgate.</u>	TDC, KCC and members – are concerned about inconsiderate parking.	30/07/15 RCS & LD	Agree. To install Double Yellow line corner protection on both sides of the junctions to deal with sight lines, reduce potential vehicular conflict.	See site plan 24

Holton Close, Birchington (Site Plan 1)



Proposed double yellow lines



SLI 100018261

St James Terrace/St Davids Close, Birchington (Site Plan 2)

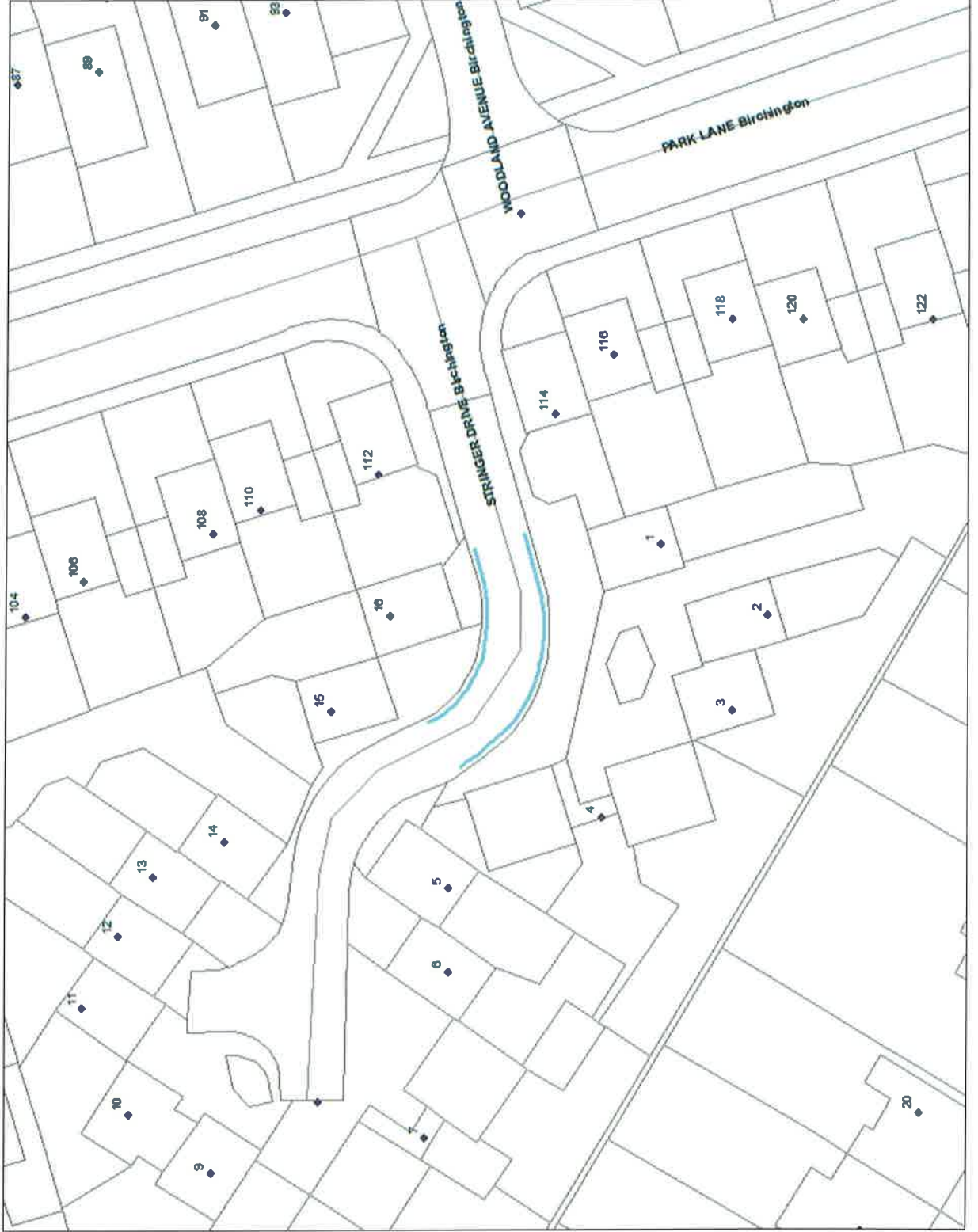


Proposed double yellow line
corner protection



SLI 100018261

Stringer Drive, Birchington (Site Plan 3)



Proposed double yellow lines



SLI 100018261

Norman Road, Broadstairs (Site Plan 4)



Proposed double yellow lines



SLI 100018261

Byron Avenue/Shakespeare Road, Margate (Site Plan 5)



Proposed double yellow lines



SLI 100018261

Grotto Hill/Grotto Gardens, Margate (Site Plan 6)

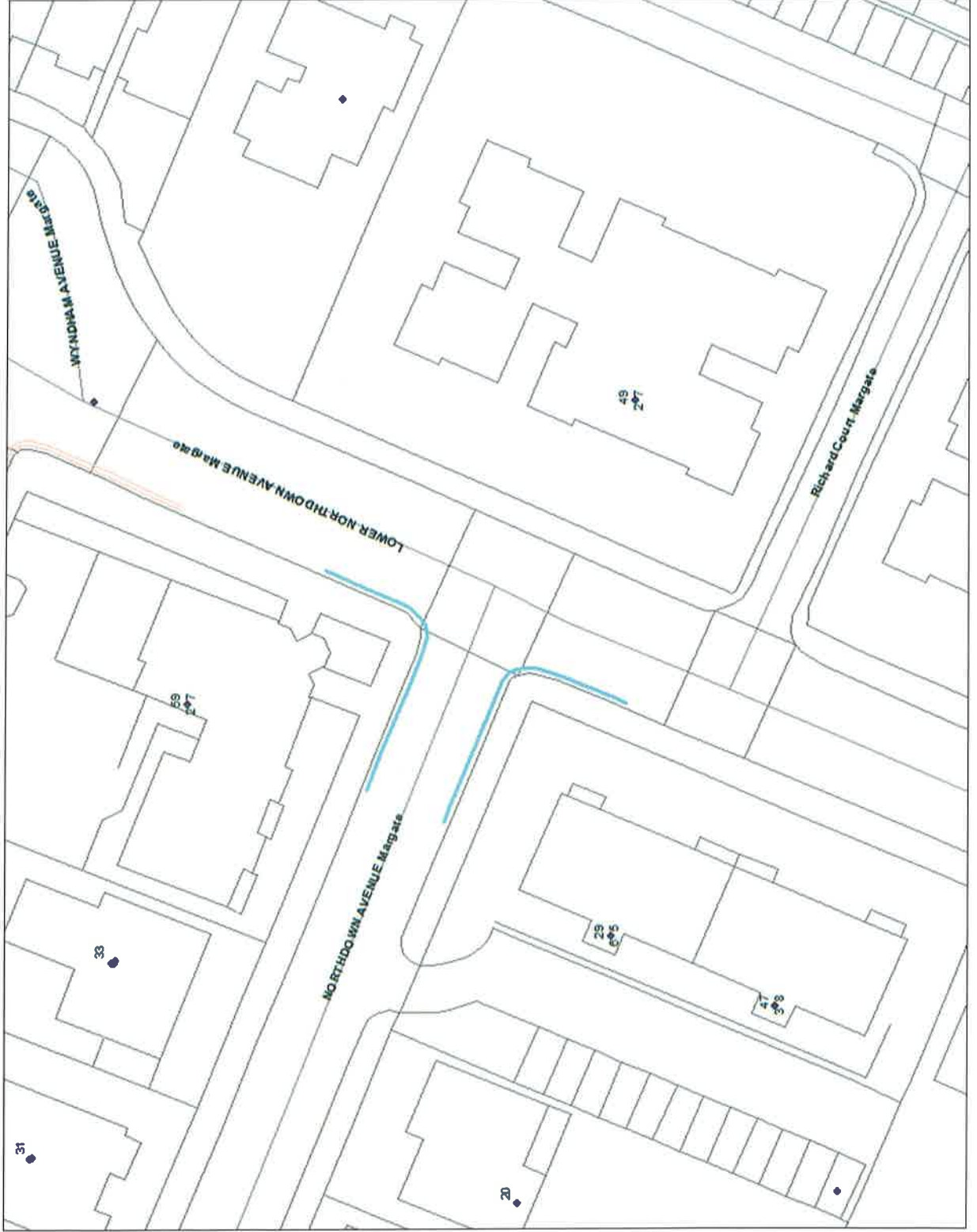


Proposed double yellow lines



SLI 100018261

Lower Northdown Avenue/Northdown Avenue, Margate (Site Plan 7)



Proposed double yellow lines at the junction.



SLI 100018261

Old Crossing Road, Margate (Site Plan 8)

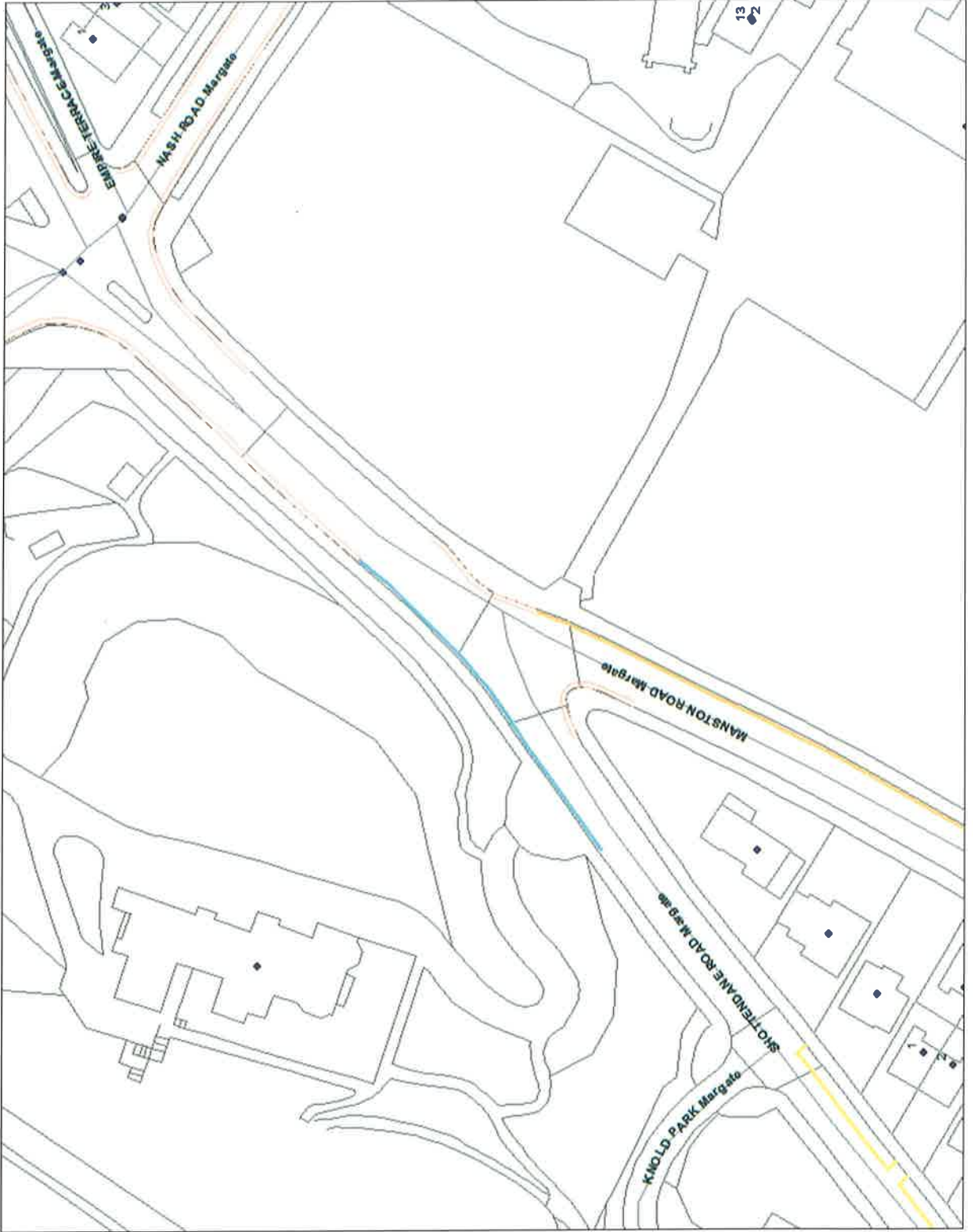


Proposed double yellow lines



SLI 100018261

Shottendane Road/Manston Road, Margate (Site Plan 9)



Proposed double yellow lines



SLI 100018261

Albert Street, Ramsgate (Site Plan 10)

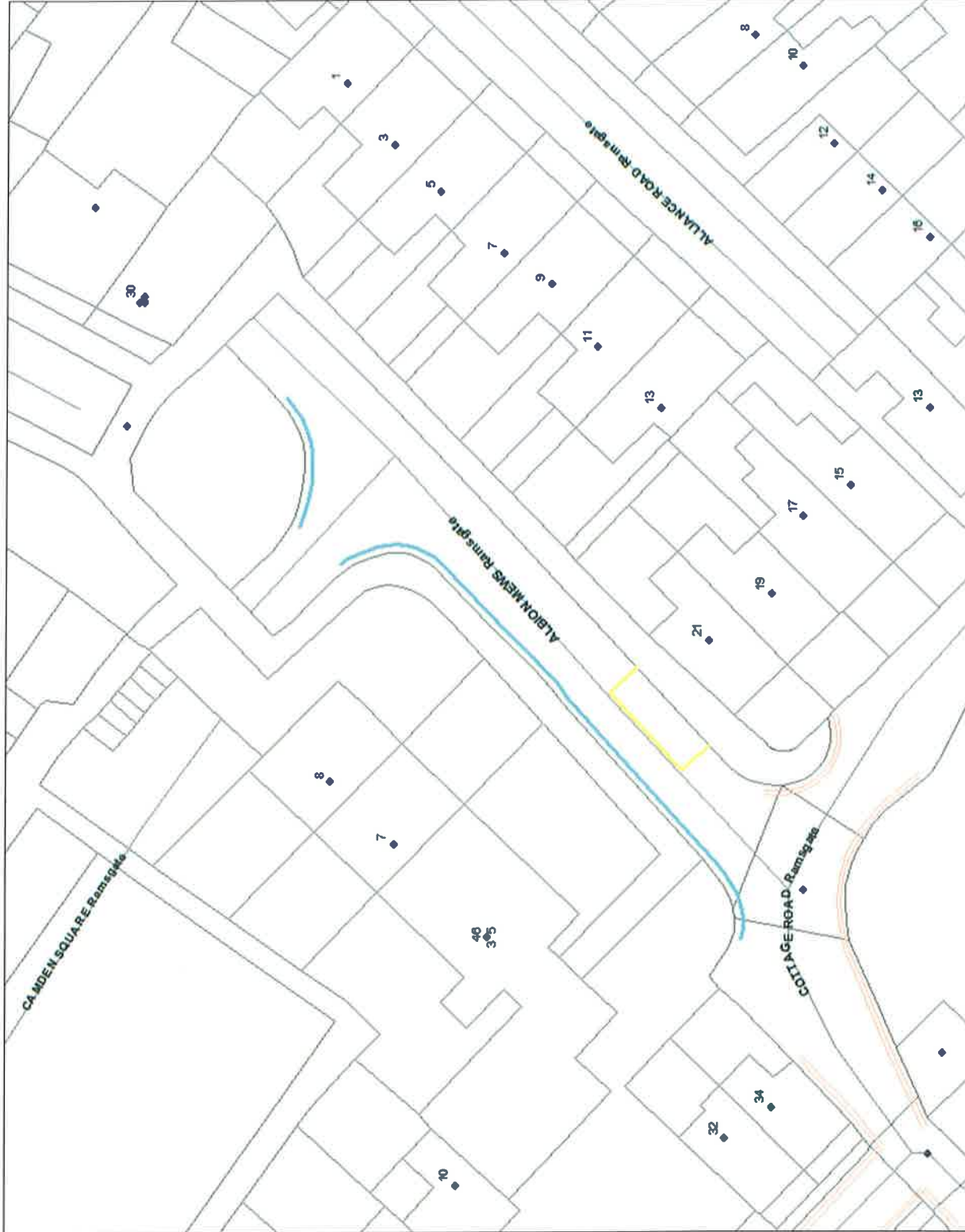


Proposed double yellow line



SLI 100018261

Albion Mews, Ramsgate (Site Plan 11)



Proposed double yellow lines.



SLI 100018261

Codrington Road/Crescent Road, Ramsgate (Site Plan 12)



Proposed double yellow lines



SLI 100018261

Dumpton Park Drive, Ramsgate (Site Plan 13)



Proposed double yellow lines



SLI 100018261

Duncan Road/Coronation Road, Ramsgate (Site Plan 14)

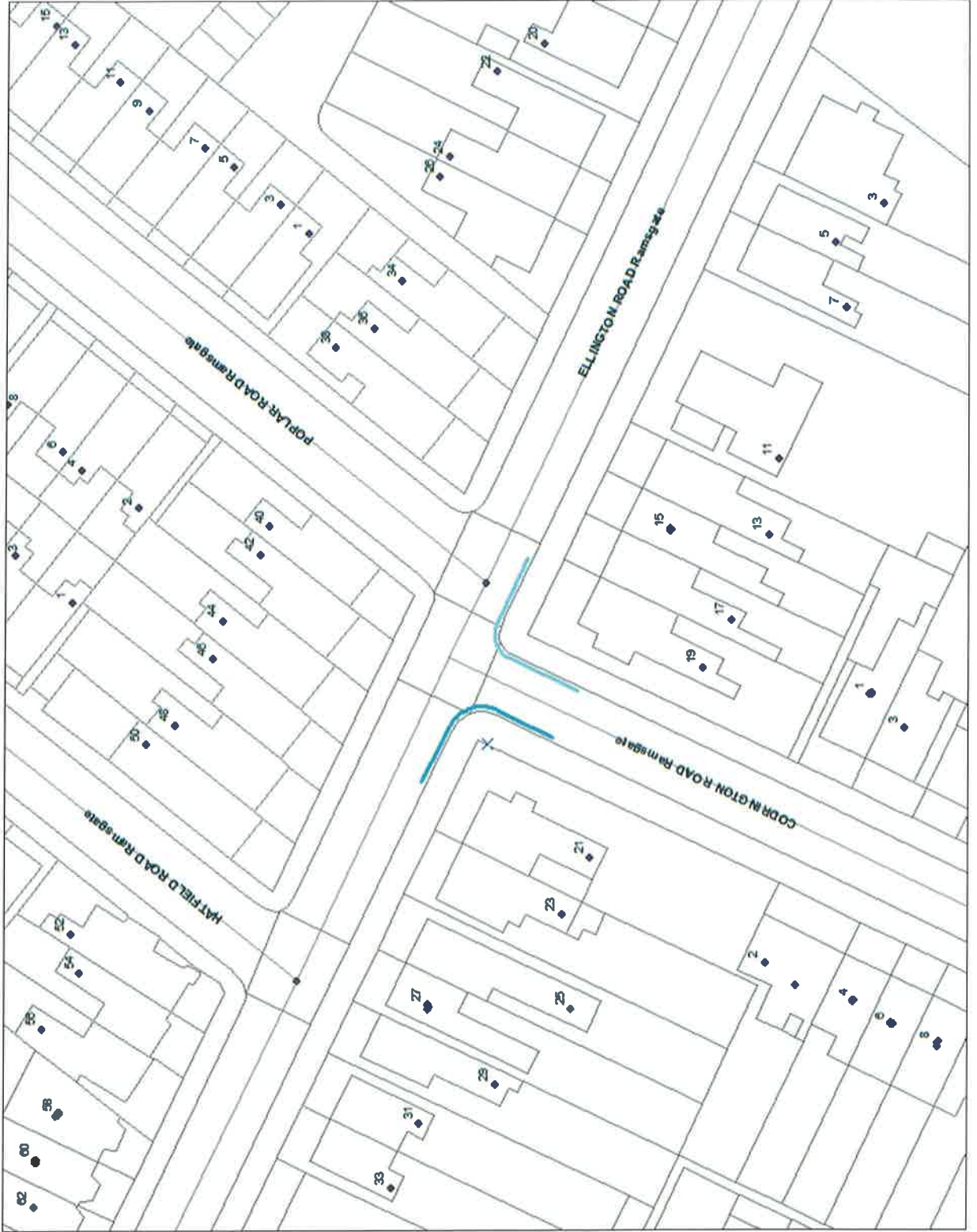


Proposed double yellow lines



SLI 100018261

Ellington Road/Codrington Road, Ramsgate (Site Plan 15)



Proposed double yellow lines



SLI 100018261

Fir Tree Close/Southwood Gardens, Ramsgate (Site Plan 16)



Proposed double yellow line corner protection on one junction.



SLI 100018261

Hallcroft Court/Ashburnham Road, Ramsgate (Site Plan 17)

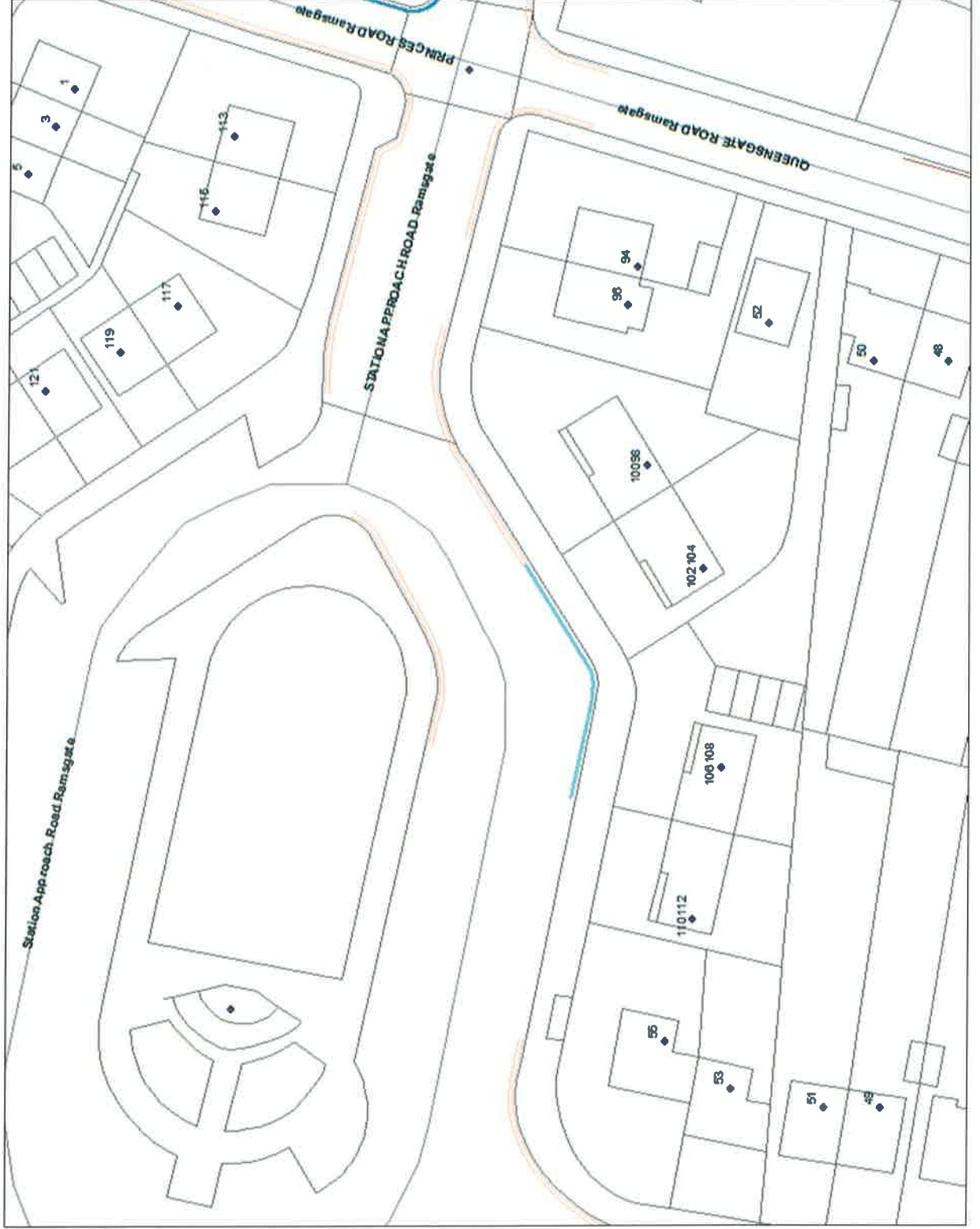


Proposed double yellow lines



SLI 100018261

Station Approach Road, Ramsgate (Site Plan 18)

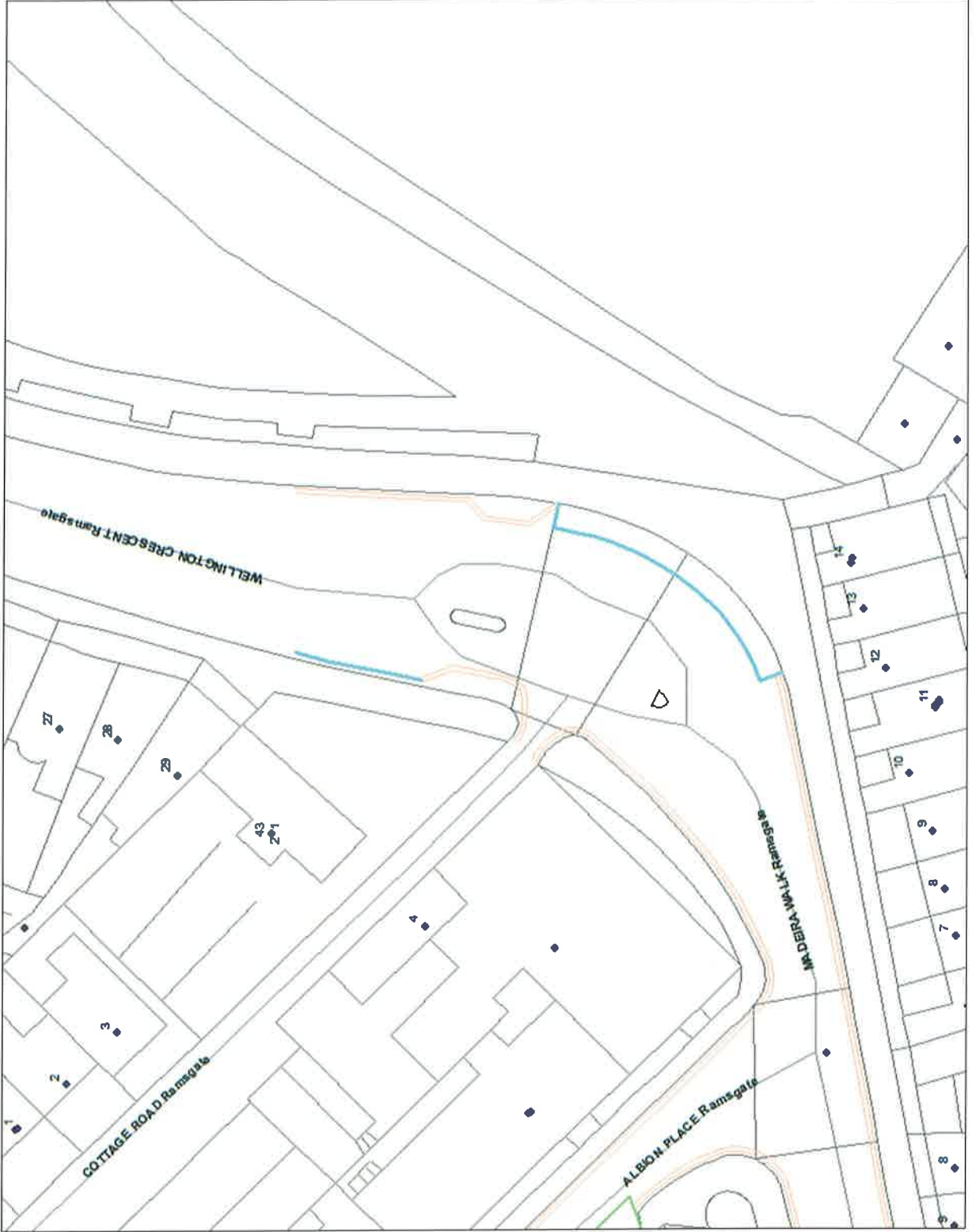


Proposed double yellow lines



SLI 100018261

Wellington Crescent/Madeira Walk, Ramsgate (Site Plan 19)



Proposed removal of double yellow lines to create more additional free parking bays.



SLI 100018261

Cedric Road/Cuthbert Road, Westgate (Site Plan 20)



Proposed double yellow line
corner protection



SLI 100018261

Dent-de-Lion/Cuthbert Road, Westgate (Site Plan 21)



Proposed double yellow line
corner protection



SLI 100018261

Egbert Road/Ethelred Road, Westgate (Site Plan 22)



Proposed double yellow lines



SLI 100018261

Ivanhoe Road, Westgate (Site Plan 23)

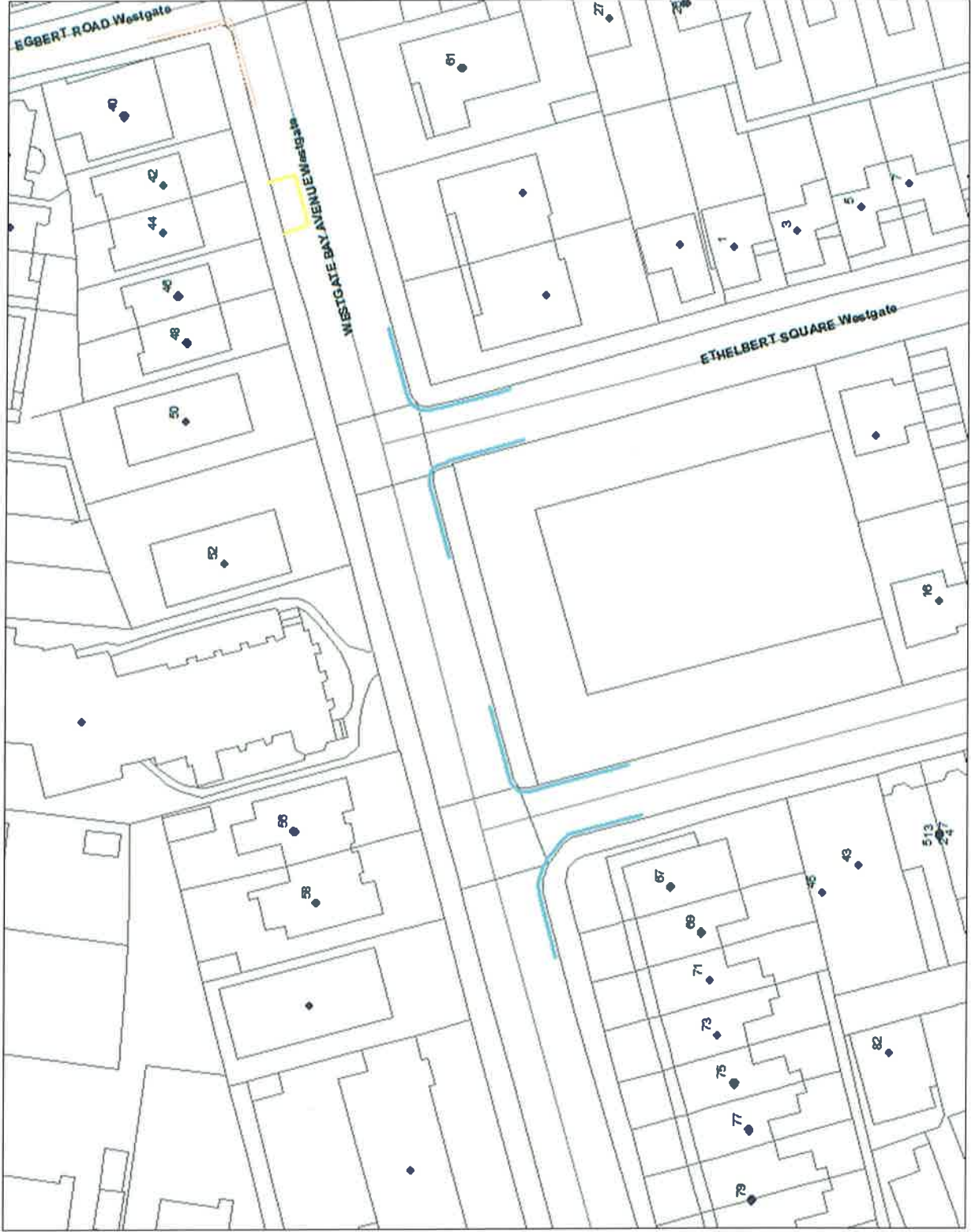


Proposed double yellow lines



SLI 100018261

Westgate Bay Avenue/Ethelbert Square, Westgate (Site Plan 24)



Proposed double yellow lines



SLI 100018261